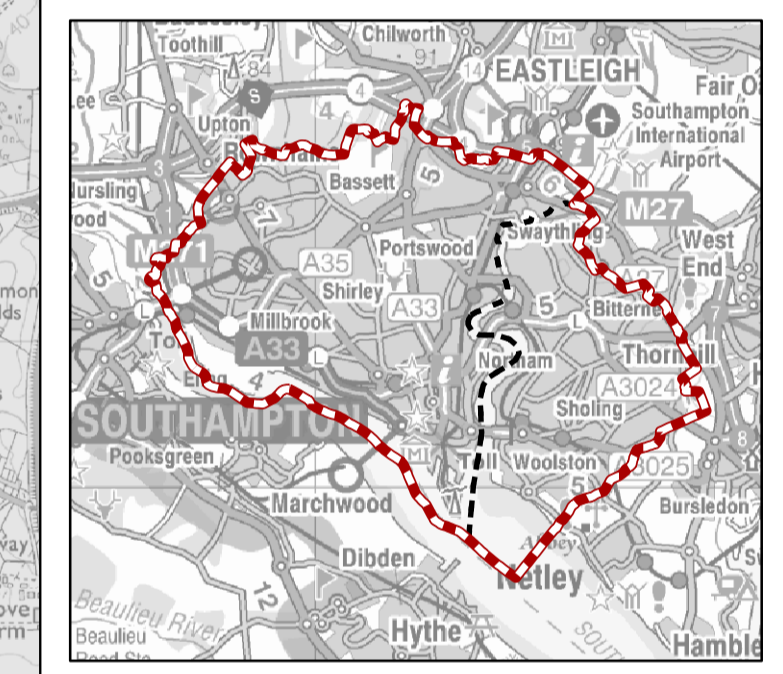
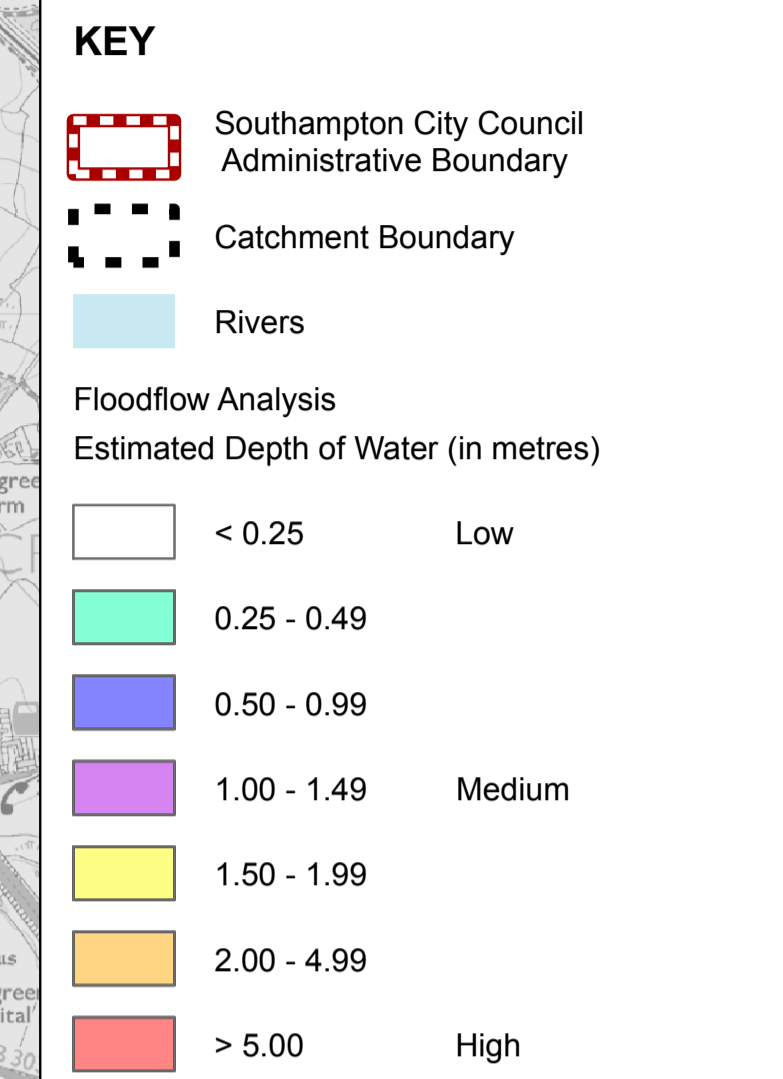


**NOTES**

1. "1 in X YR, Y mins" represents a storm event with a return period of "X" years and a duration of "Y" minutes.
2. Based on a 10x10m grid using an "Apply Rainfall" methodology.
3. DTM (Digital Terrain Model) has been created using LIDAR provided by the Environment Agency.



REV	DR	CH	PA	DATE
DRAWN BY	CHECKED BY	PASSED BY	DATE	
ST	FN	RW	03.11	
SCALE			ISSUING OFFICE	
SCALE @ A1			1:16,500	
SCALE @ A3			1:33,000	
			E.Grinstead	

## Southampton SWMP

Modelling of Overland Flows  
1 in 200YR + 30%, 15 mins

